



DRAGONFIRE®

Portable Wood & Pellet Smokeless Fire Pit Bundle

LIGHTING & ASSEMBLY INSTRUCTIONS



DRAGONFIREPIT.COM

Connect with us @[@DRAGONFIREPIT](https://www.instagram.com/DRAGONFIREPIT)



HOW TO USE YOUR FIRE PIT

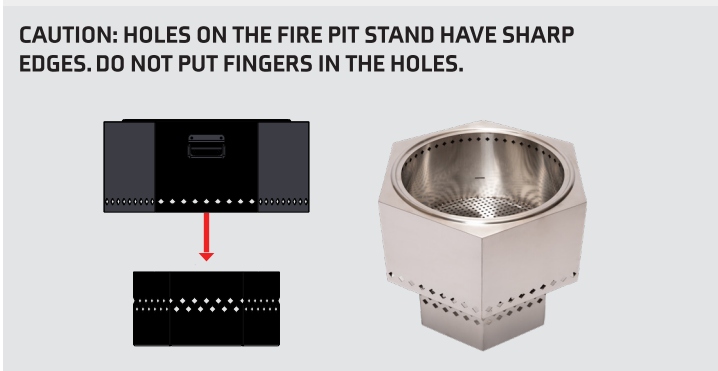
When first lighting the fire it will smoke until the fire is hot enough and the air from the double wall starts to push the smoke into the flames. Since smoke is a fuel, it then ignites the smoke making the fire pit virtually smokeless, but no fire is actually smokeless. If you use wet or green wood it will be much harder to make the firepit smokeless so use dry hardwood for best use.

DO NOT USE THE DRAGONFIRE® FIRE PIT ON A DECK THAT IS MADE OF COMBUSTIBLE MATERIALS.

1 Unpack parts and make sure all pieces are present before assembling.



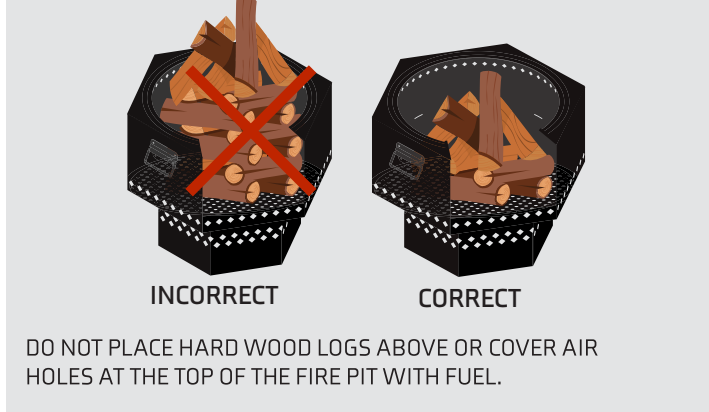
2 Take the ash base stand and place it on an even surface. Center the burn chamber on top of the stand.



3 Light your Dragonfire® fire pit! Start fire with small kindling twigs, fire starters or use wood pellets.

Use dry hardwoods for best results. Hardwood is best for a long burn. As the fire dies down, replenish with additional fuel, wood, or pellets. *Note: If using wood pellets, do not add too quickly, there will be excessive smoke until they ignite properly.*

DO NOT PUT ANY METAL IN FIRE PIT. IT WILL CAUSE DAMAGE TO THE FIRE PIT.



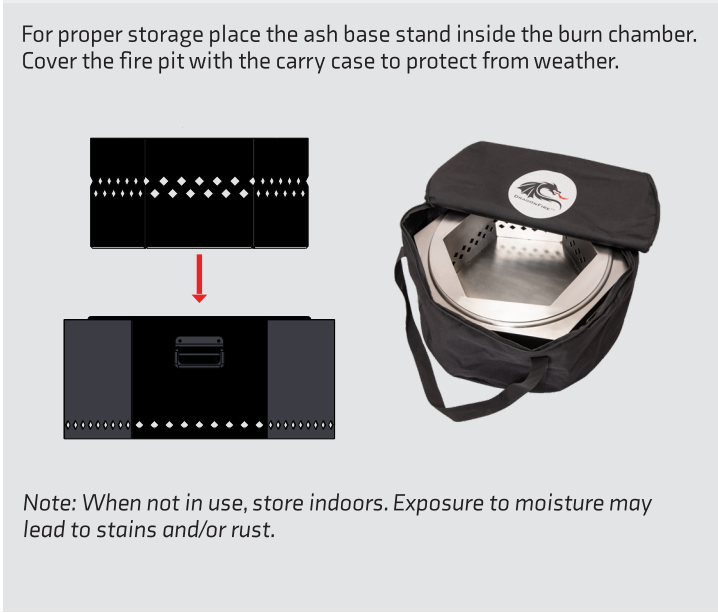
4 When burn is complete, let the fire extinguish on its own. DO NOT EXTINGUISH FIRE WITH WATER.



5 Once cooled, discard ash and residue from the ash base stand. For a deep clean wipe down fire pit with a soft cloth.



6 When done using fire pit cover with carry case and store it in a safe place.



Warning and safety instructions that appear in this instruction manual are not meant to cover all situations and conditions that may occur while using your Dragonfire® fire pit. When using your Dragonfire® fire pit the same precautions should be followed as with any use of open fire.

LOCAL, STATE, AND NATIONAL CODES SHOULD ALWAYS BE FOLLOWED WHEN USING THE DRAGONFIRE® FIRE PIT. FOR MORE DETAILS CONTACT YOUR LOCAL FIRE DEPARTMENT.

USER WARNINGS

- Do not use the fire pit for indoor heating. Asphyxiation and possible death can occur from the accumulation of poisonous carbon monoxide.
- Do not put any aluminum, copper, or any metal in the firepit. It will damage it.
- Risk of injury to the user as well as damage to fire pit could occur if water is used to extinguish the fire.
- Do not touch or move the Dragonfire® fire pit while in use. The surface is extremely hot and can cause burns and/or serious injury. Wait until the fire pit is completely out and cooled down to handle fire pit.
- When lighting fire or when the fire pit is in use do not lean over the Dragonfire® fire pit.
- Keep fire pit away from electrical cords.
- Dragonfire® fire pits are designed for use with standard firewood logs and may not function properly with other fuel sources.
- Do not leave the Dragonfire® fire pit unattended.
- Never change or modify the Dragonfire® fire pit from its original form.
- Consumer's ability to operate the Dragonfire® fire pit safely may be impaired when alcohol, prescription, or non-prescription drugs are in use.
- Use Dragonfire® fire pit on an even non-combustible surface. Use with hazard on wood or composite decks.
- When using the fire pit avoid breathing in smoke from the fire and getting smoke into your eyes.
- Commercial use for Dragonfire® fire pits is not allowed.
- Do not use fire pit near automobiles, recreational vehicles, trucks, or vans.
- Do not use or store combustible materials, gasoline, or any flammable liquids near fire pit.
- While the fire pit is in use, never store or use LP gas cylinders within 30 feet of the fire pit.
- Do not use the Dragonfire® fire pit under or close to any overhanging trees or shrubs. Do not use fire pit under any overhead or near any unprotected combustible constructions.
- Avoid using fire pit when windy outside.
- When operating the fire pit do not wear flammable or loose clothing.
- When lighting or relighting fire pit, do not use gasoline, kerosene, diesel fuel, lighter fluid, alcohol, or any other flammable liquid.

CHILD SAFETY

- Children should not operate or be unattended with the Dragonfire® fire pit.
- Children should never be allowed to sit or stand in Dragonfire® fire pit as they could become seriously injured or burned.

CLEANING SAFETY

- After each use the Dragonfire® fire pit should be cleaned and examined regularly.
- Do not touch coals or ash to see if they're still warm. Wait until coals and ash are completely extinguished and the fire pit has completely cooled to remove or clean any coals and ash from the Dragonfire® fire pit.
- Wait until all fire, coals, and ashes are completely extinguished and the fire pit has completely cooled to store or move your Dragonfire® fire pit.
- Signs of damage and creosote buildup may appear after a period of non-use of the Dragonfire® fire pit. Avoid using the fire pit until the fire pit is cleaned and/or repaired.

FIRE HAZARDS

- Do not use fire pit indoors. Dragonfire® fire pits are for outdoor use only.
- Do not use the fire pit in a boat or a recreational vehicle.



TIPS FOR BUILDING THE FIRE

Prep: Gather your firewood

Only need three types of wood to light up your Dragonfire®

You can use any wood you like as long as it is dry. We recommend hardwood, such as oak, because it burns longer and hotter than softwood.



1. Fire starters or small twigs for tinder

For fire starters, we prefer wood nuggets, wood fire sticks, paper rolls and dry twigs.



2. Hardwood splits for kindling

To make kindling, split logs using the Dragonfire® Xtreme Kindling Cutter or a hatchet.



3. Hardwood logs for fuel wood

For fuel wood, we used hardwood logs cut to around 14-16" in length. These can be firewood bought from a store or from fallen tree branches you've gathered.

1. Use small kindling logs to create a base

Take your small kindling logs and create a square border around the center of your Dragonfire®. This will keep the fire starters you add in the next step in place.

2. Place fire starters on the base grate

You'll need to use 2-3 fire starters to help get your fire roaring. Space your fire starters evenly inside the square border, one in the center and one on either side near the edge of the square border.

3. Use small logs or sticks to form a teepee

Take one of your smaller pieces of kindling and place it on top of the square border from top to bottom. Create a teepee with the rest of your kindling logs by stacking them into a pyramid around the top. Stacking your kindling allows air to flow to an ember bed to fuel your larger firewood logs.

4. Light fire starters

Use a long-nose lighter, like one you use for lighting candles, to light your fire starters.

5. Add larger logs and enjoy!

After around 2-3 minutes, your kindling should be fully caught and a nice ember bed has started to form. Go ahead and start to add your larger hardwood logs one at a time. Allow each log to catch fire before adding another. Never place hardwood logs higher than the fire breathing rim as this will prevent airflow and circulation.

